

The logo consists of the letters 'NA' in a white, bold, sans-serif font, set against a blue square background.

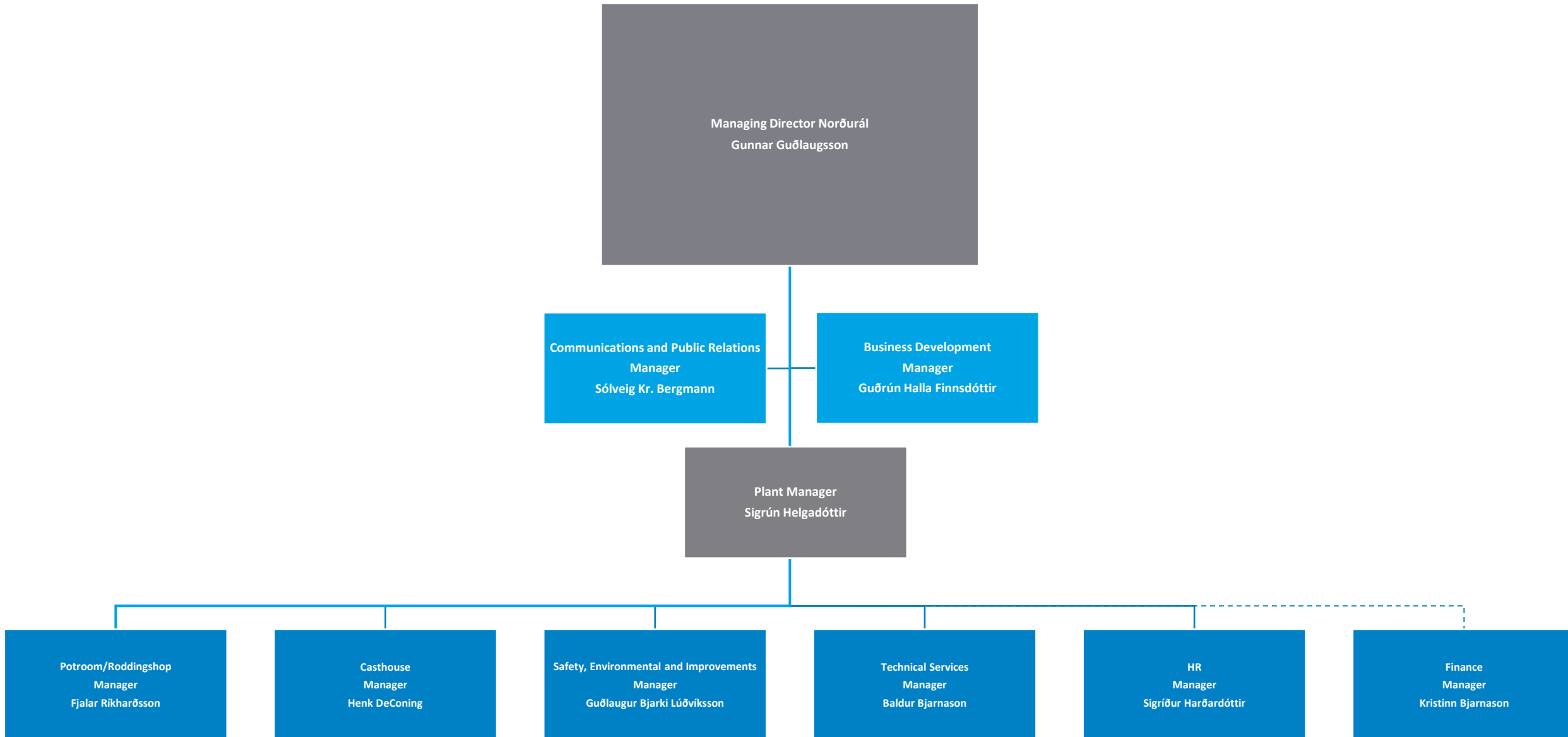
NORÐURÁL

Norðurál

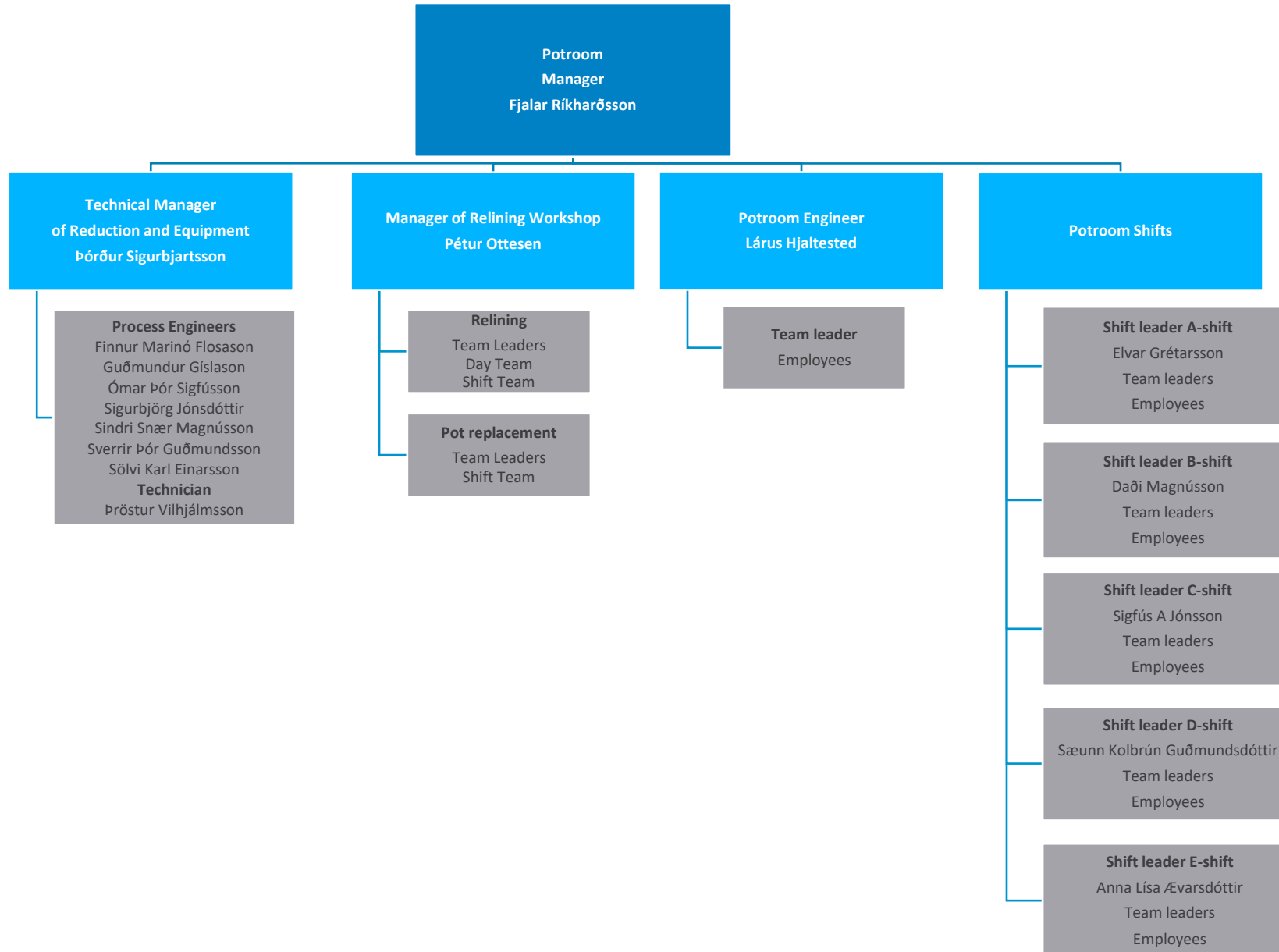
Organization

Janúar 2025

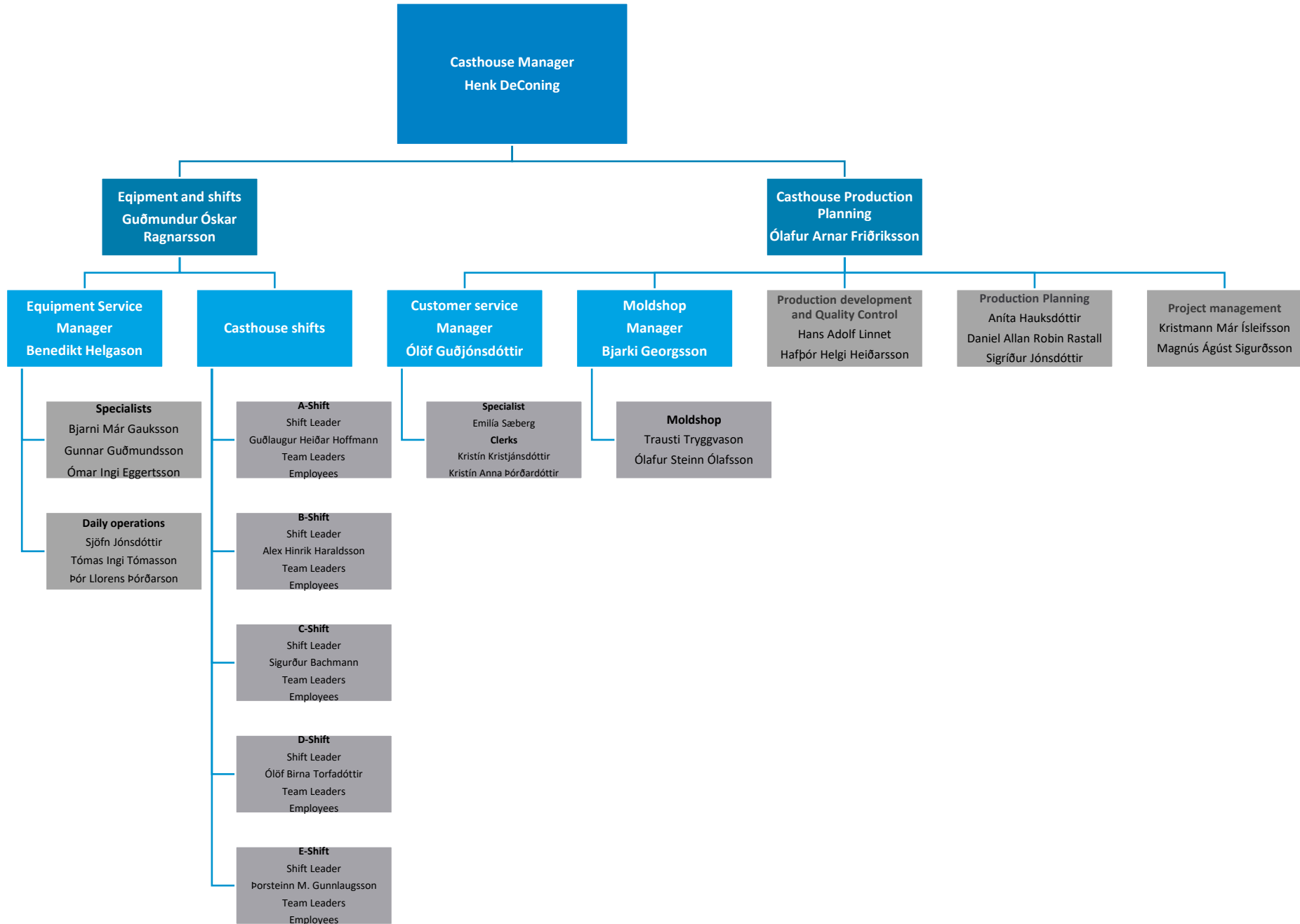
Organizational chart for Norðurál



Potroom



Casthouse



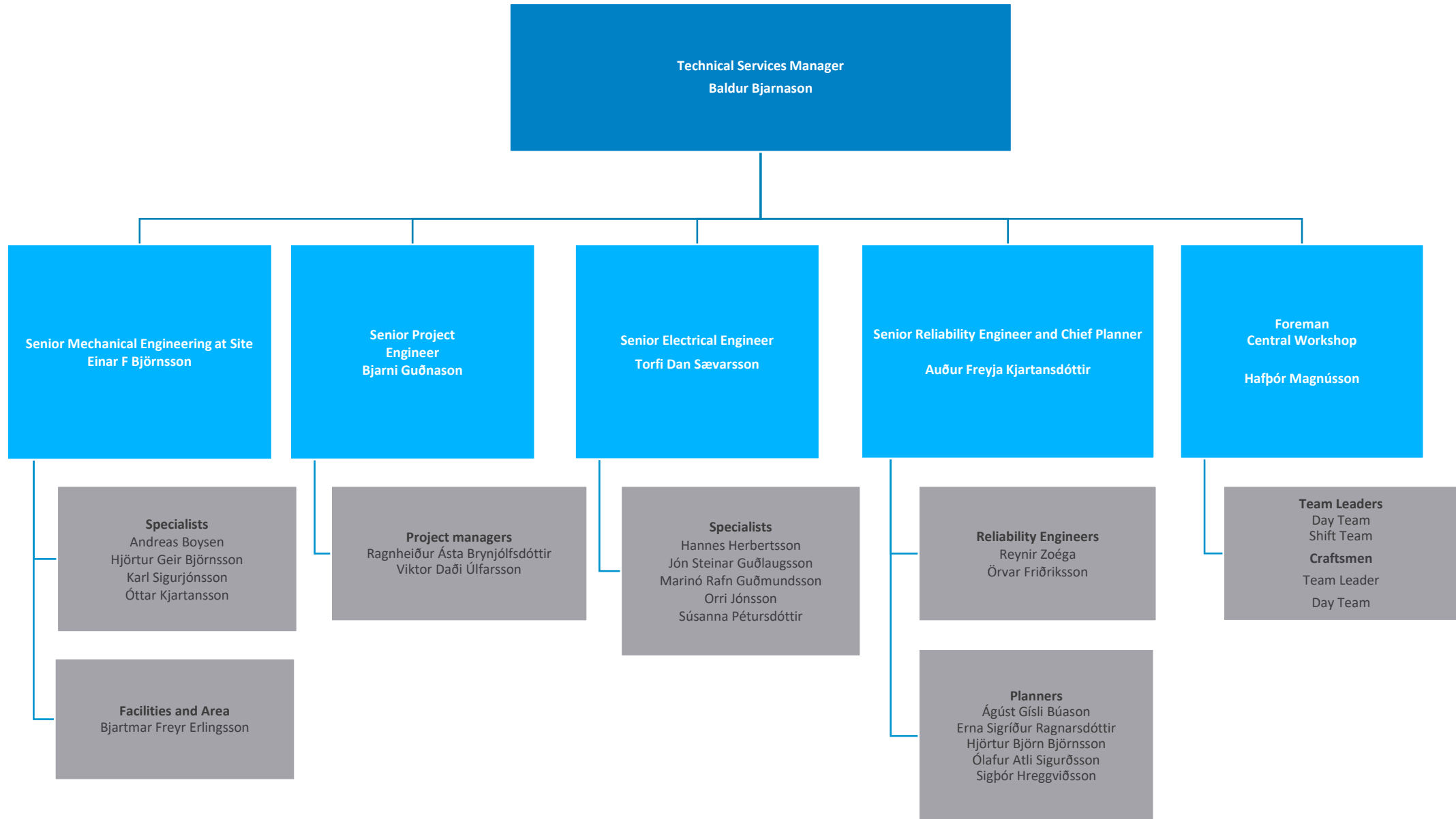
Rodding Shop



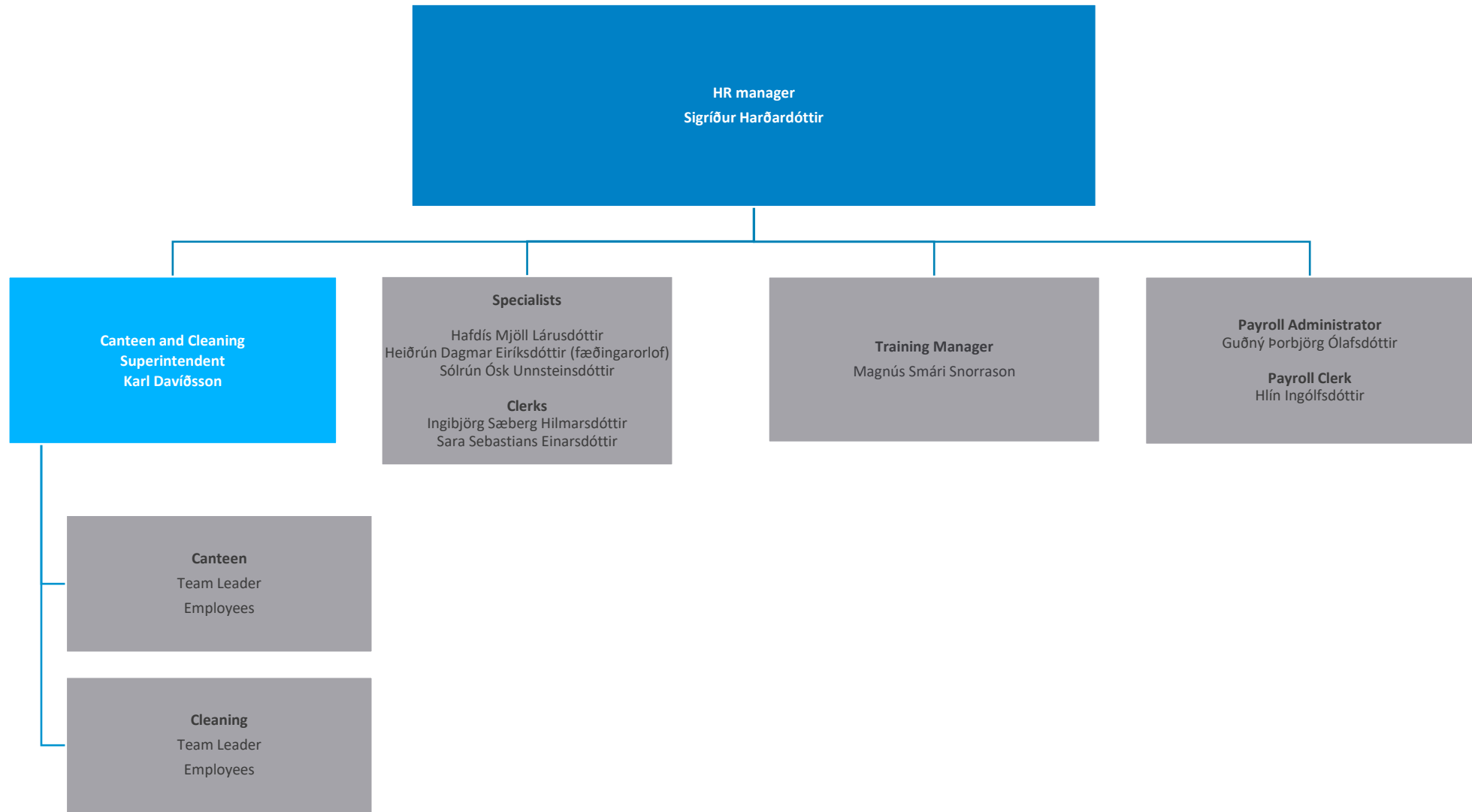
Safety, Environment and Improvements



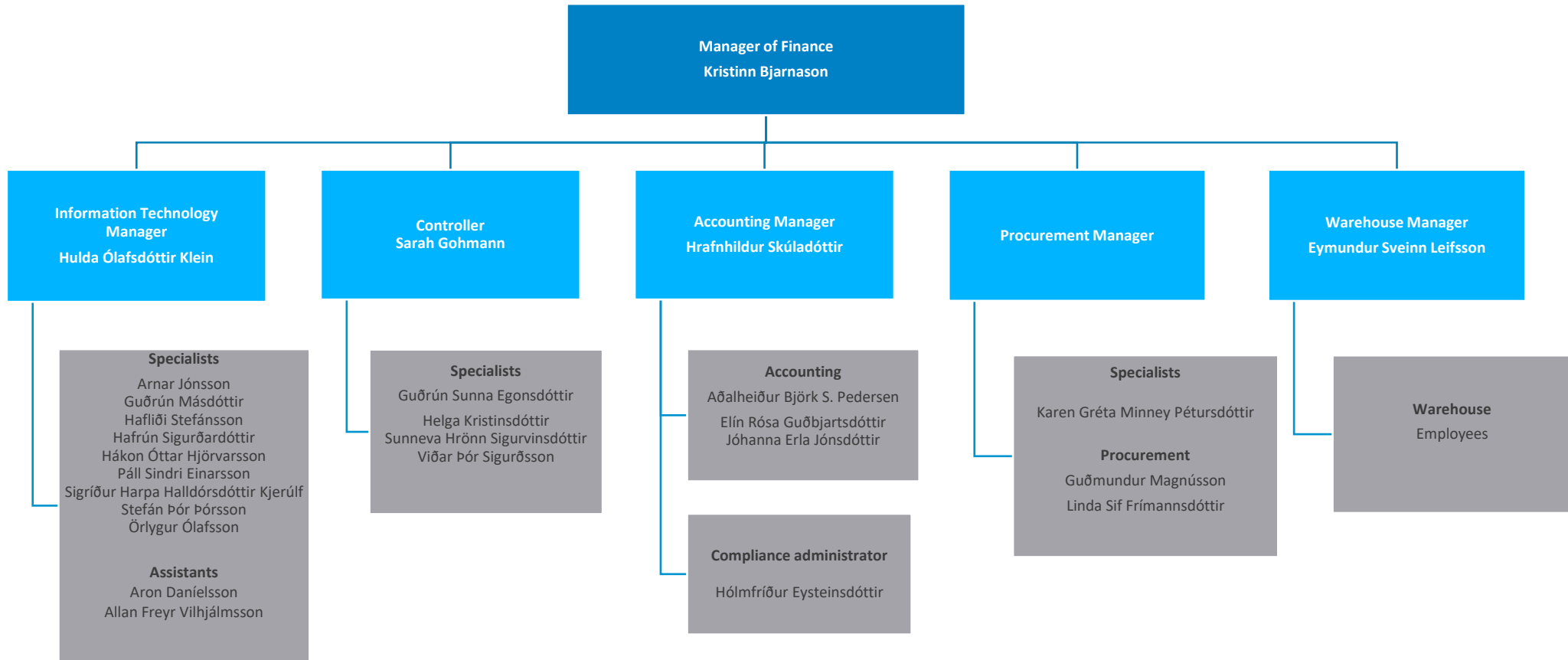
Technical Services



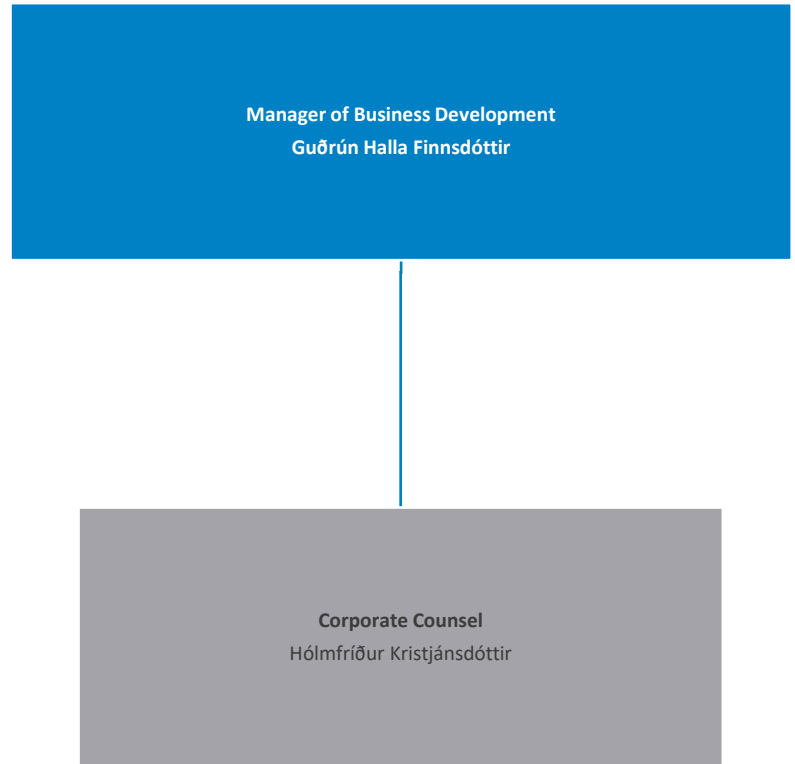
Human Resources



Finance



Business Development



Communications and Public Relations

