

The logo consists of the letters 'NA' in a white, bold, sans-serif font, set against a blue square background.

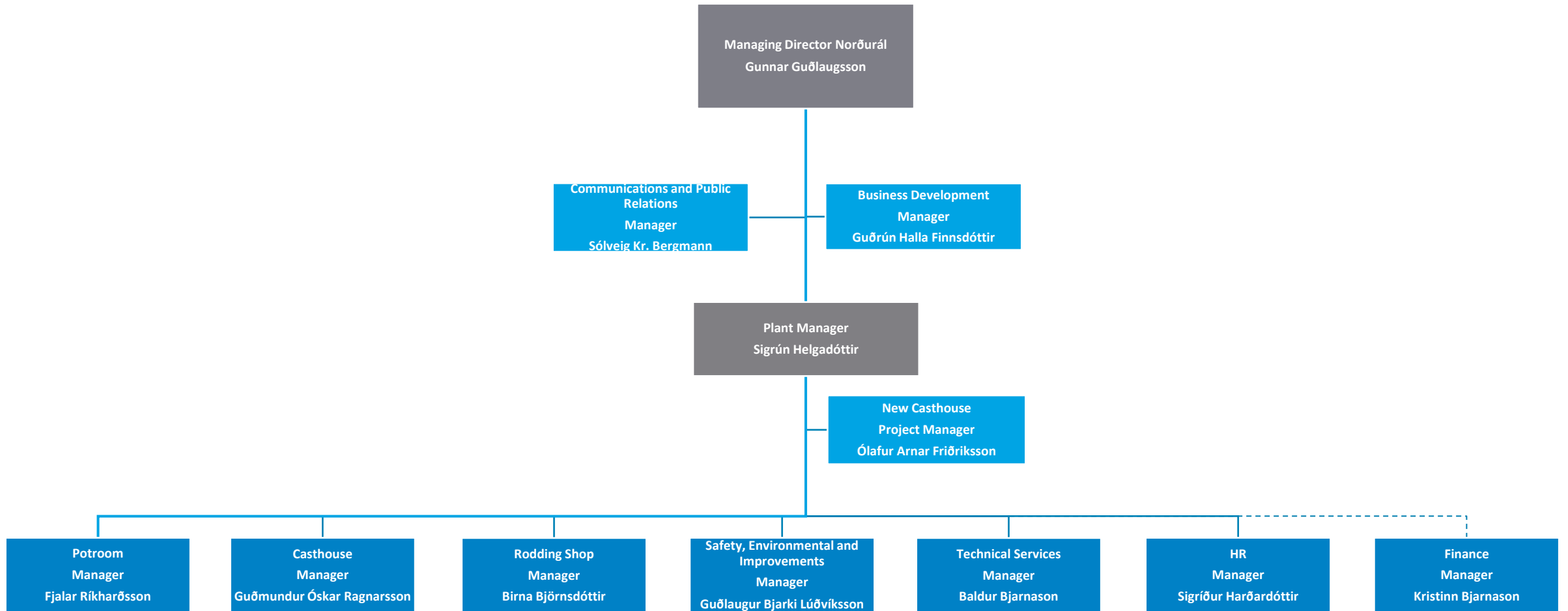
NORÐURÁL

Norðurál

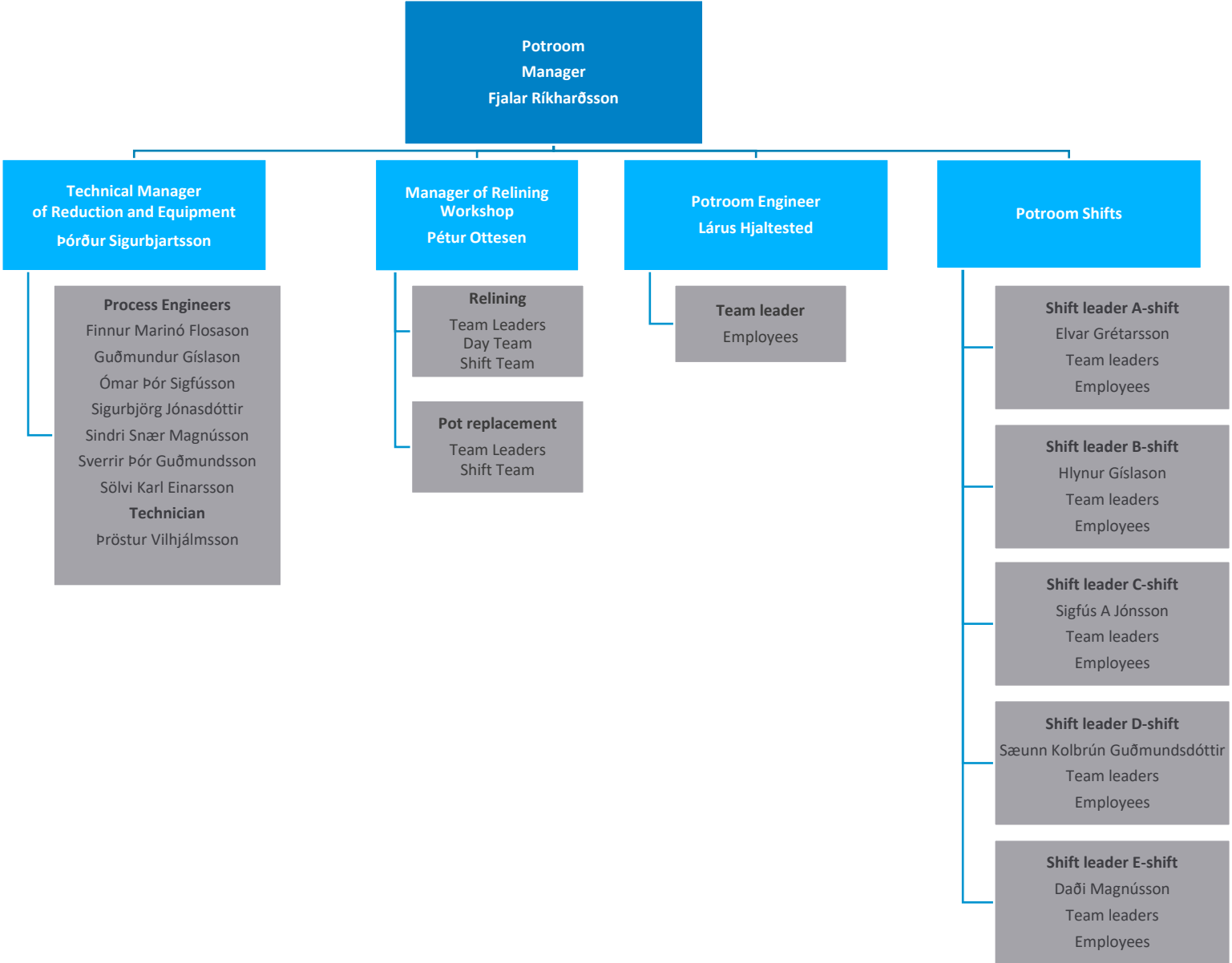
Organization

June 2024

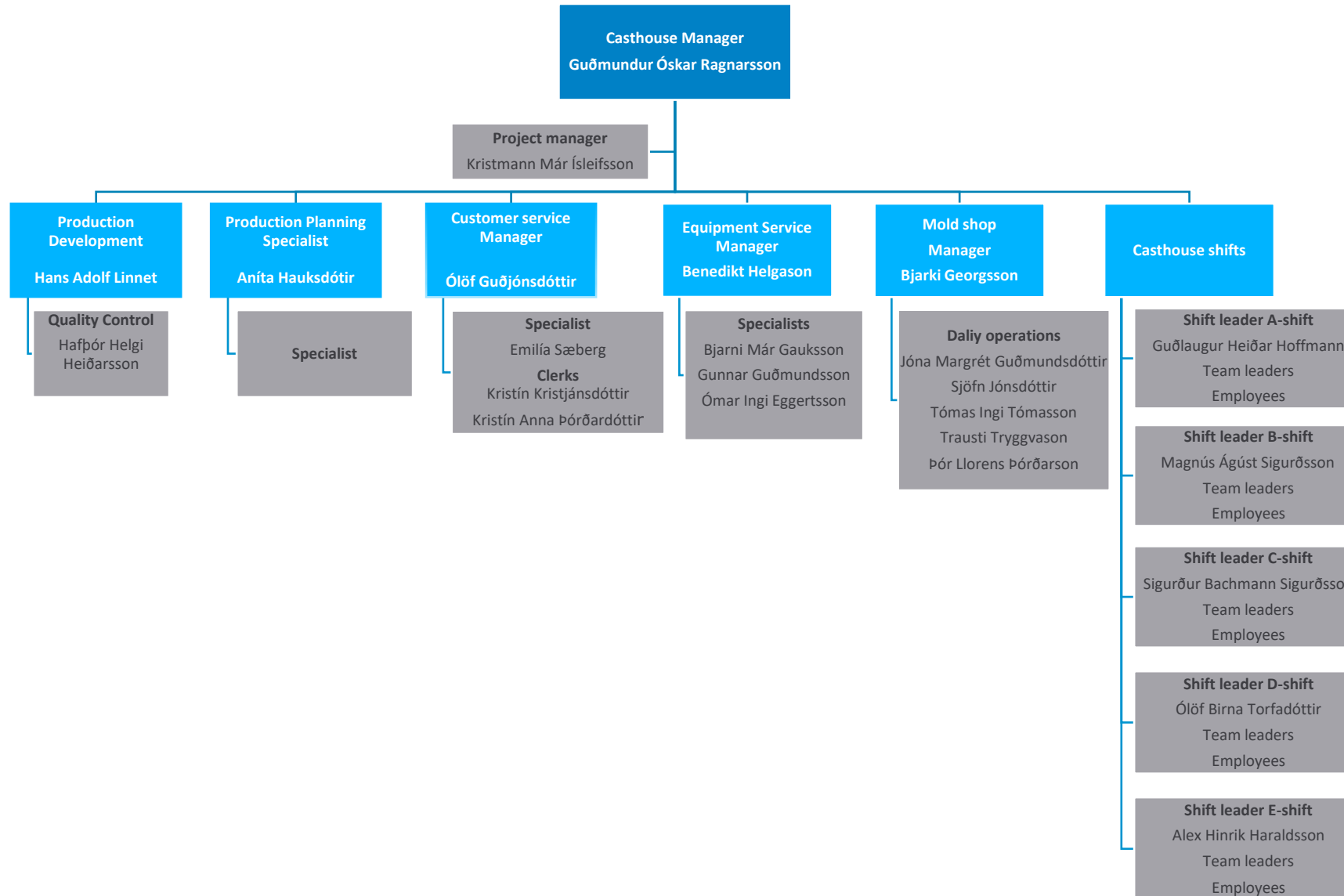
Organizational chart for Norðurál



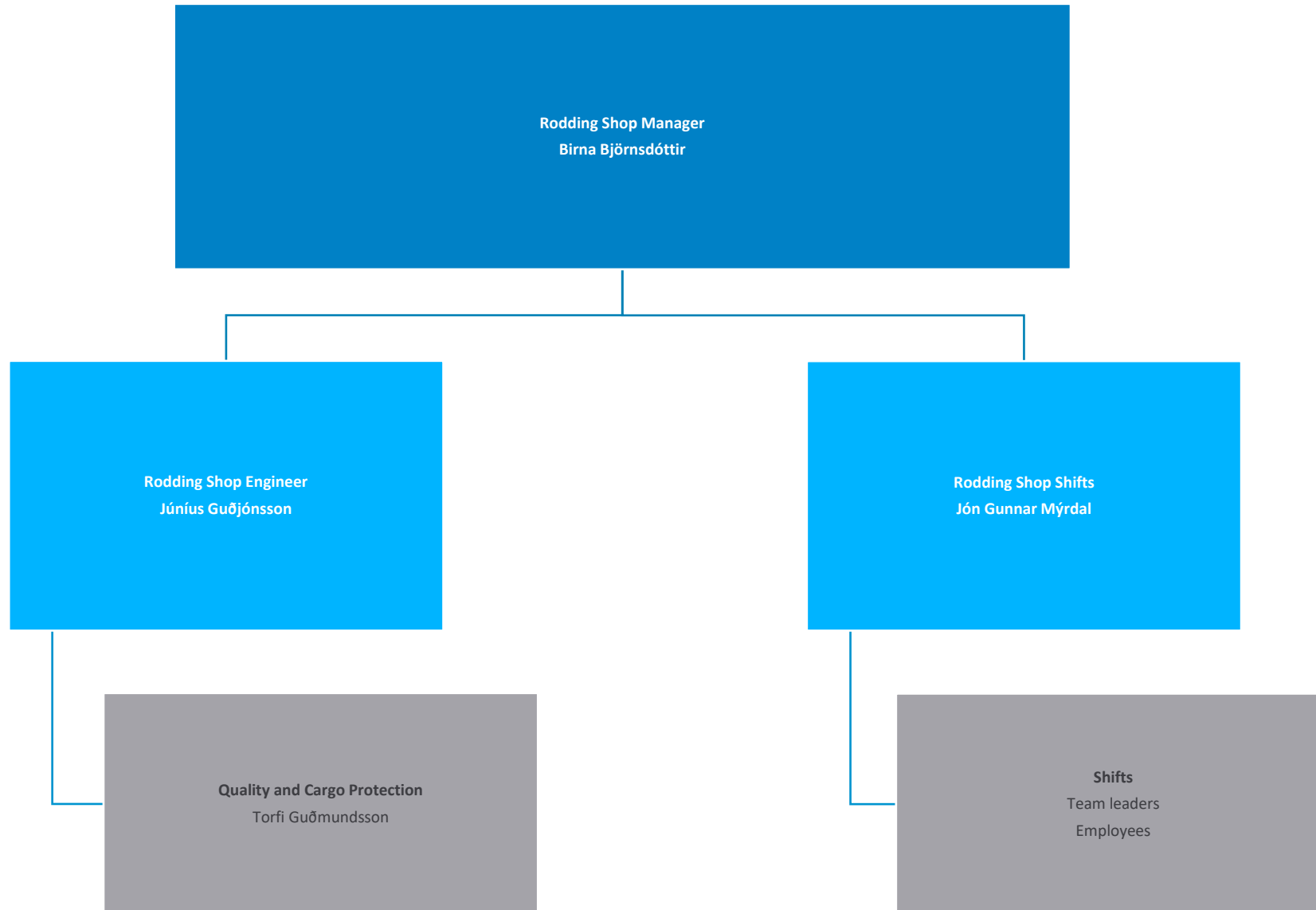
Potroom



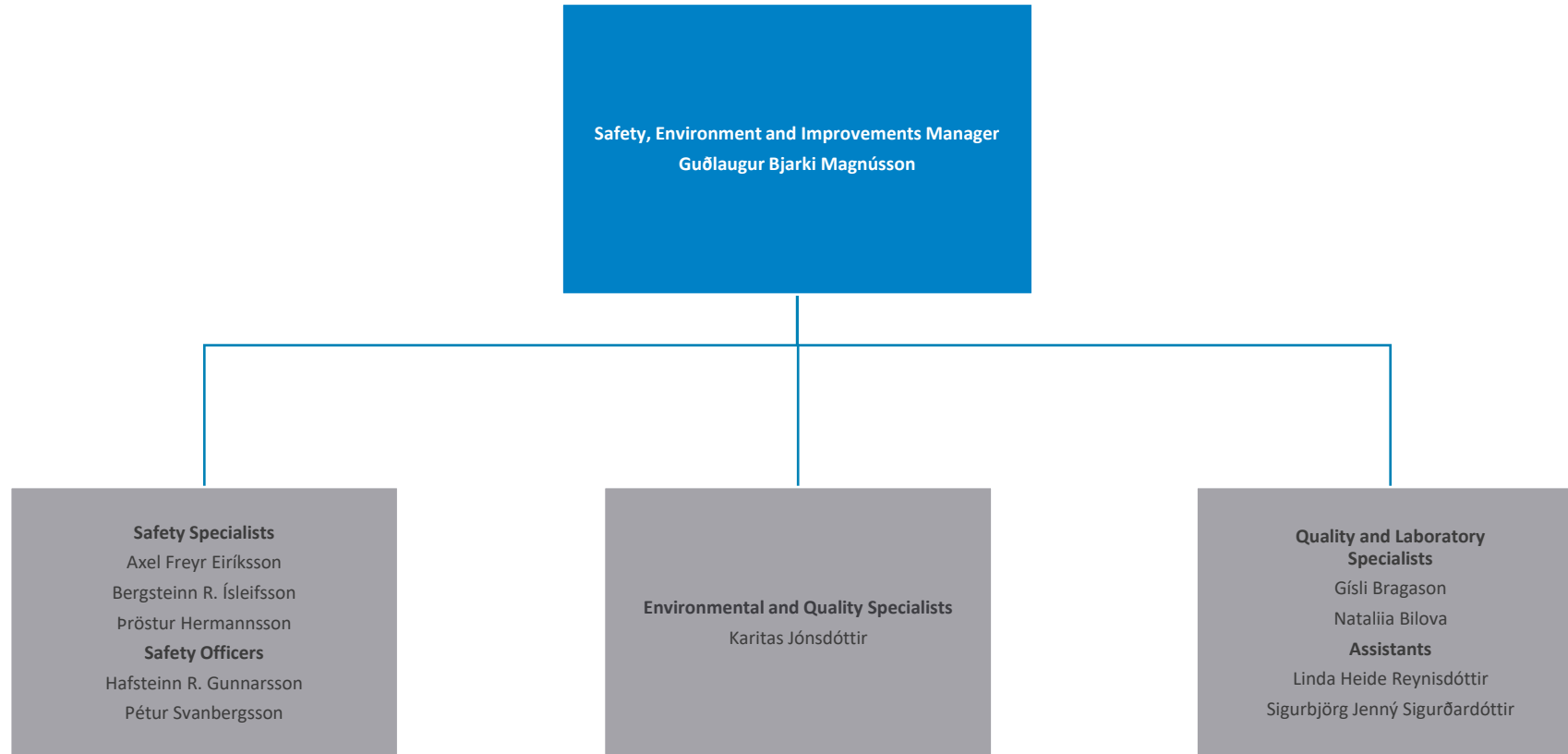
Casthouse



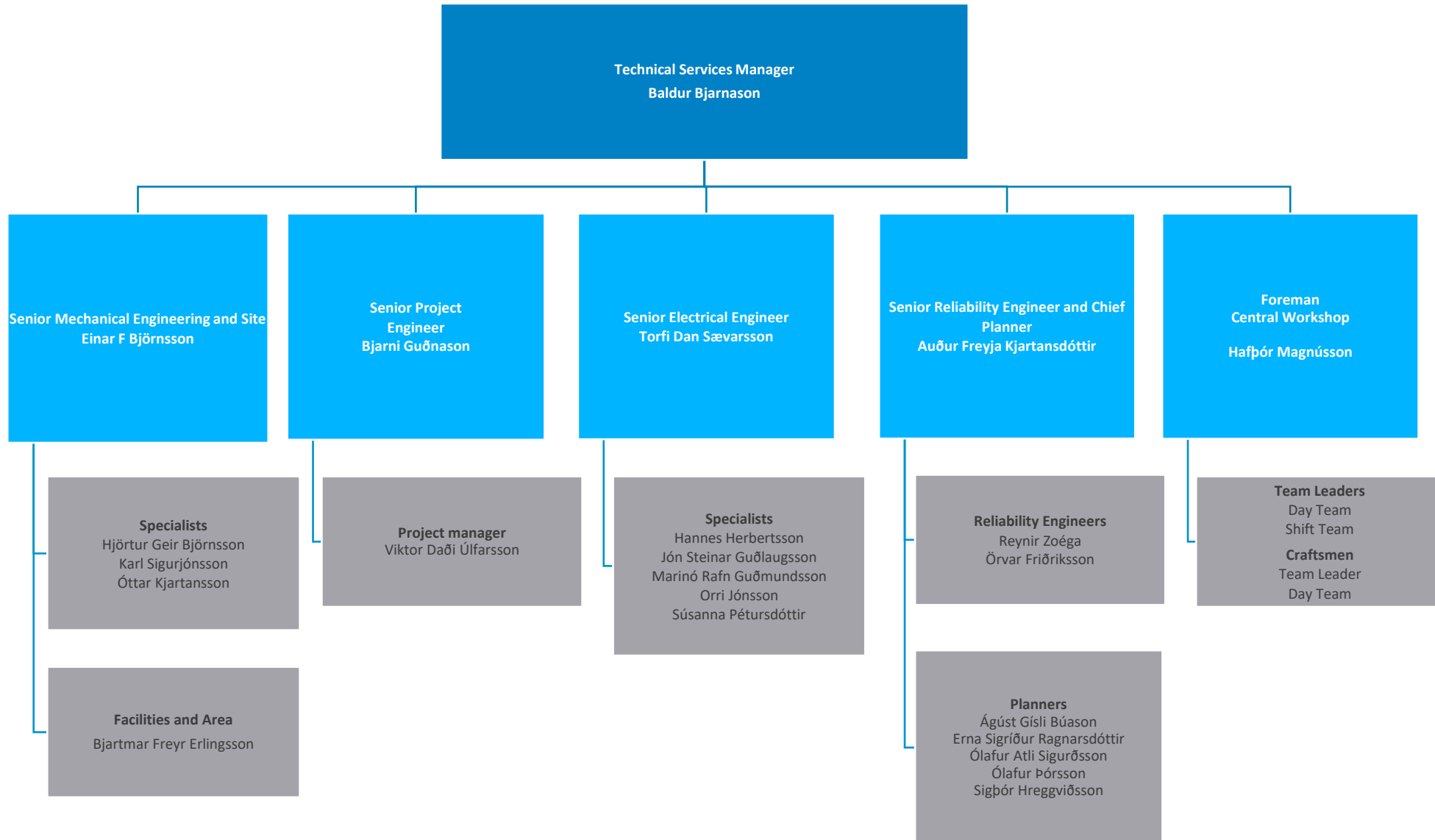
Rodding Shop



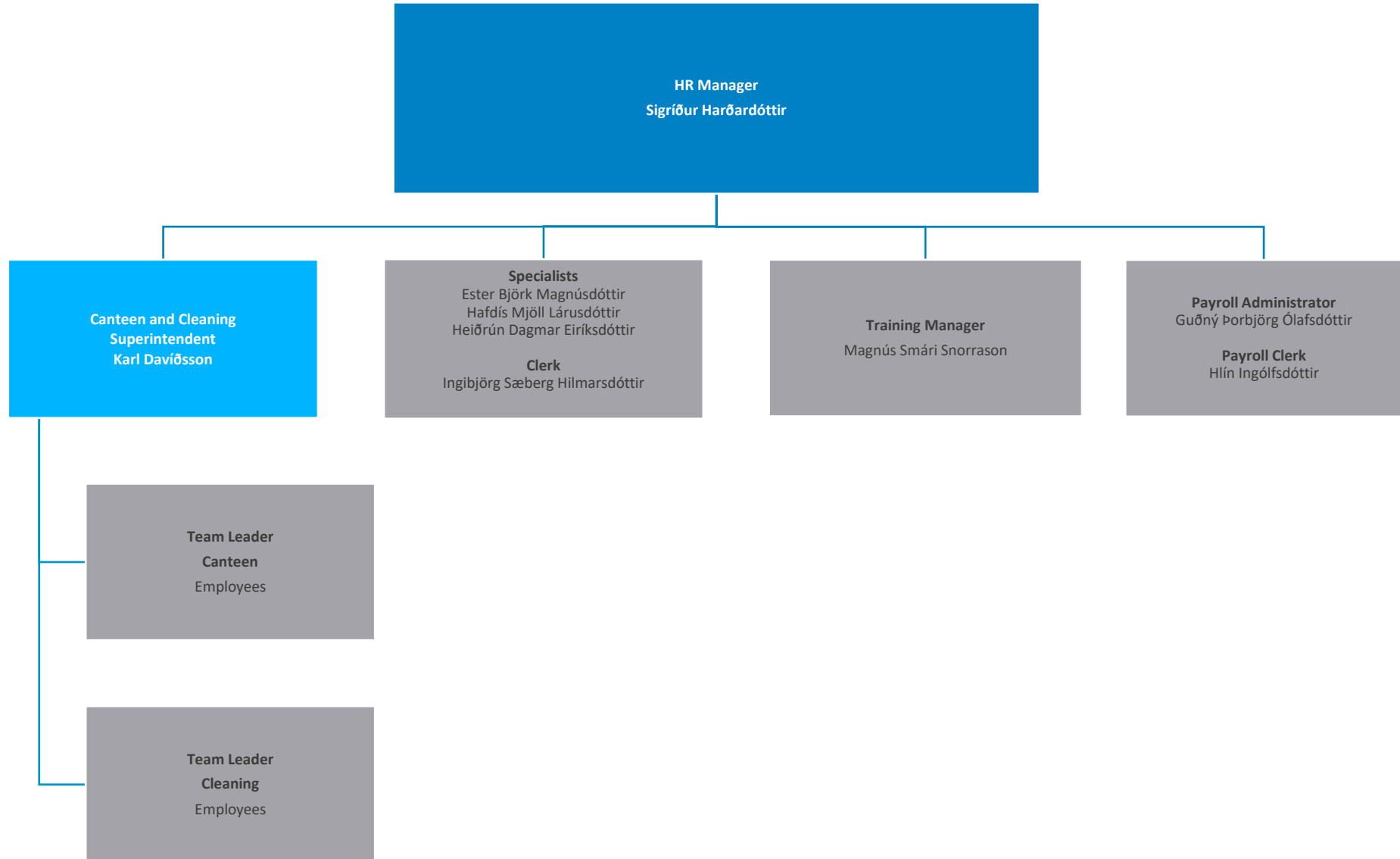
Safety, Environment and Improvements



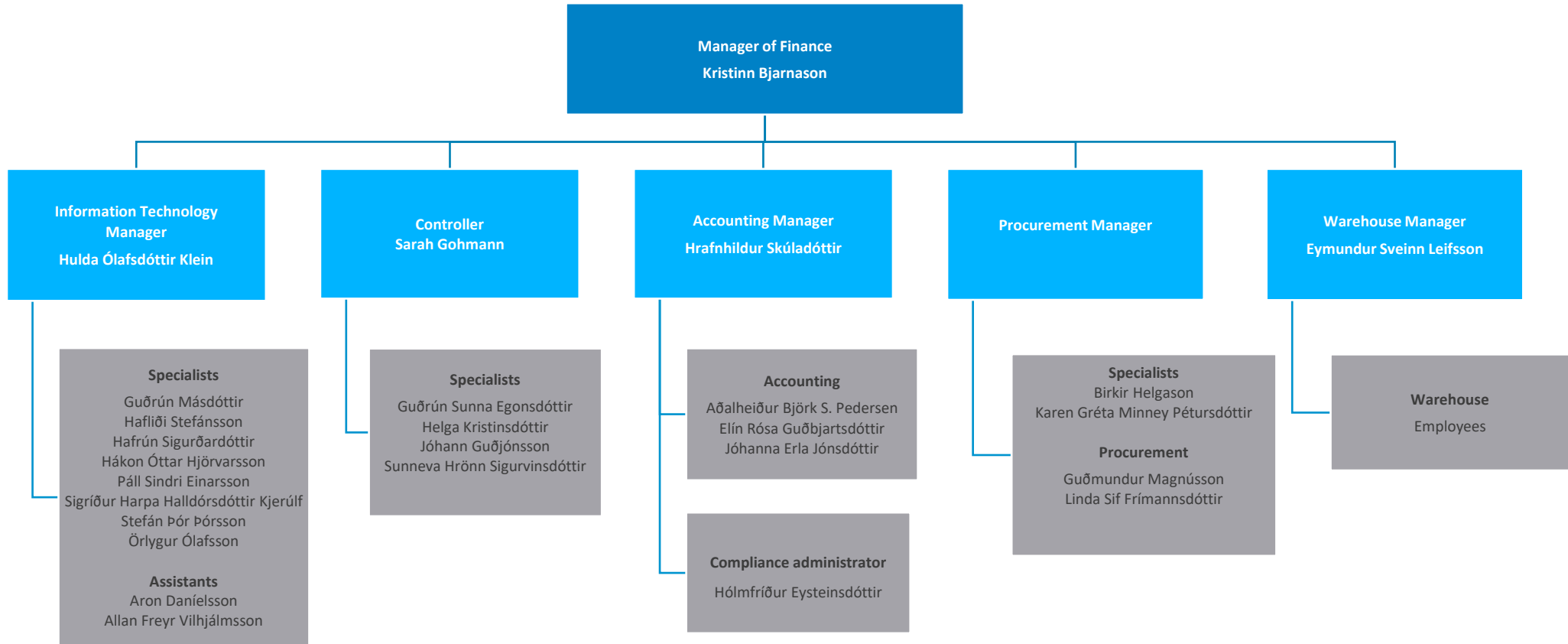
Technical Services



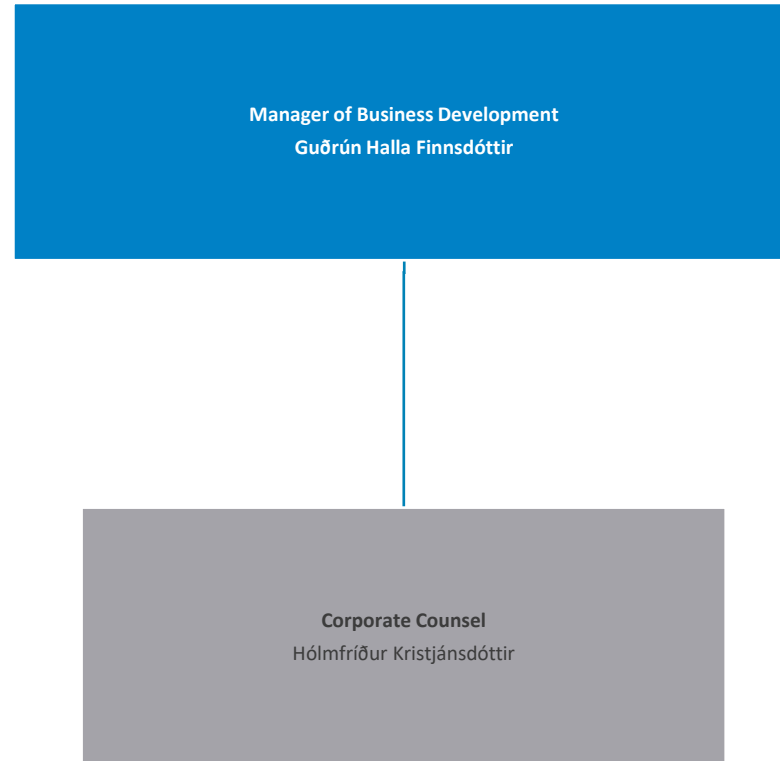
HR



Finance



Business Development



Communications and Public Relations

